



## Parts Catalog

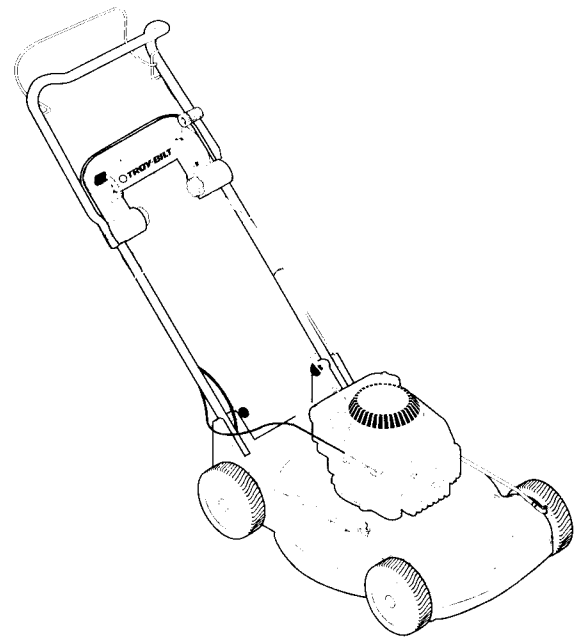
---

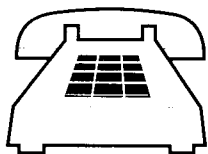
# Mulching Mower

### Models

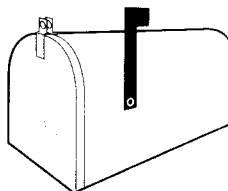
---

- 34020  
(4HP Push)
- 34021  
(4HP Single Speed)
- 34022  
(5HP Variable  
Speed)
- 34023  
(5HP Electric Start)
- 34024  
(5.5HP Blade Brake)





## HOW TO REACH US



<b>Address</b>	<b>Hours</b>	<b>Toll-Free Telephone Numbers</b>
<b>In the U.S.A:</b>  Troy-Bilt Manufacturing Company 102nd Street & 9th Avenue Troy, New York 12180	Mon.-Fri.: 8 a.m. to 7:00 p.m. Sat. 9 a.m. to 4 p.m.	For Parts Sales: 1-800-648-6776 For Technical Service: 1-800-833-6990
<b>In Canada:</b>  Garden Way Branch Canada 1515 Matheson Blvd. E., Unit B11 Mississauga, Ontario L4W 2P5	Mon.-Fri.: 8 a.m. to 4:30 p.m.	For Parts Sales or Technical Service: 1-800-225-3585



### **CAUTION**

We urge that you use only genuine TROY-BILT® replacement parts, which meet all of the latest requirements. Replacement parts manufactured by others could present safety hazards even though they may fit on this product.

## PARTS ORDERING INFORMATION

Parts for your machine may be ordered from your local servicing dealer or directly from the factory (see factory address and phone numbers on page at left). Please remember that we, or your local dealer will need to know the identification numbers of your machine to give you the most efficient service. Please see below for how to identify and record the identification numbers for your machine.

**When ordering parts, please be sure to provide the following information:**

1. The SERIAL NUMBER of your machine.
2. The PART NUMBER of the part.
3. The PART DESCRIPTION.
4. The QUANTITY needed.

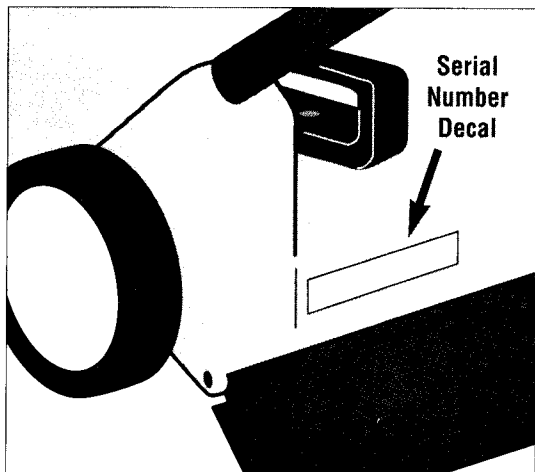
**If you need engine service or parts:**

For engine service or parts, please contact your local authorized engine dealer. Look in the Yellow Pages of your phone book under "Engines-Gasoline" for the name of your nearest authorized engine dealer. An authorized dealer can handle all parts, repairs, and warranty service concerning the engine. NOTE: Some parts on your engine are exclusive to this machine and may not be available from the engine dealer. Refer to the engine drawings in this Parts Catalog to identify and order these exclusive parts.

## IDENTIFICATION NUMBERS

Please write the Serial Number of your machine in the space provided below. You can find the location of the serial number decal by referring to the following illustration.

Serial Number: \_\_\_\_\_

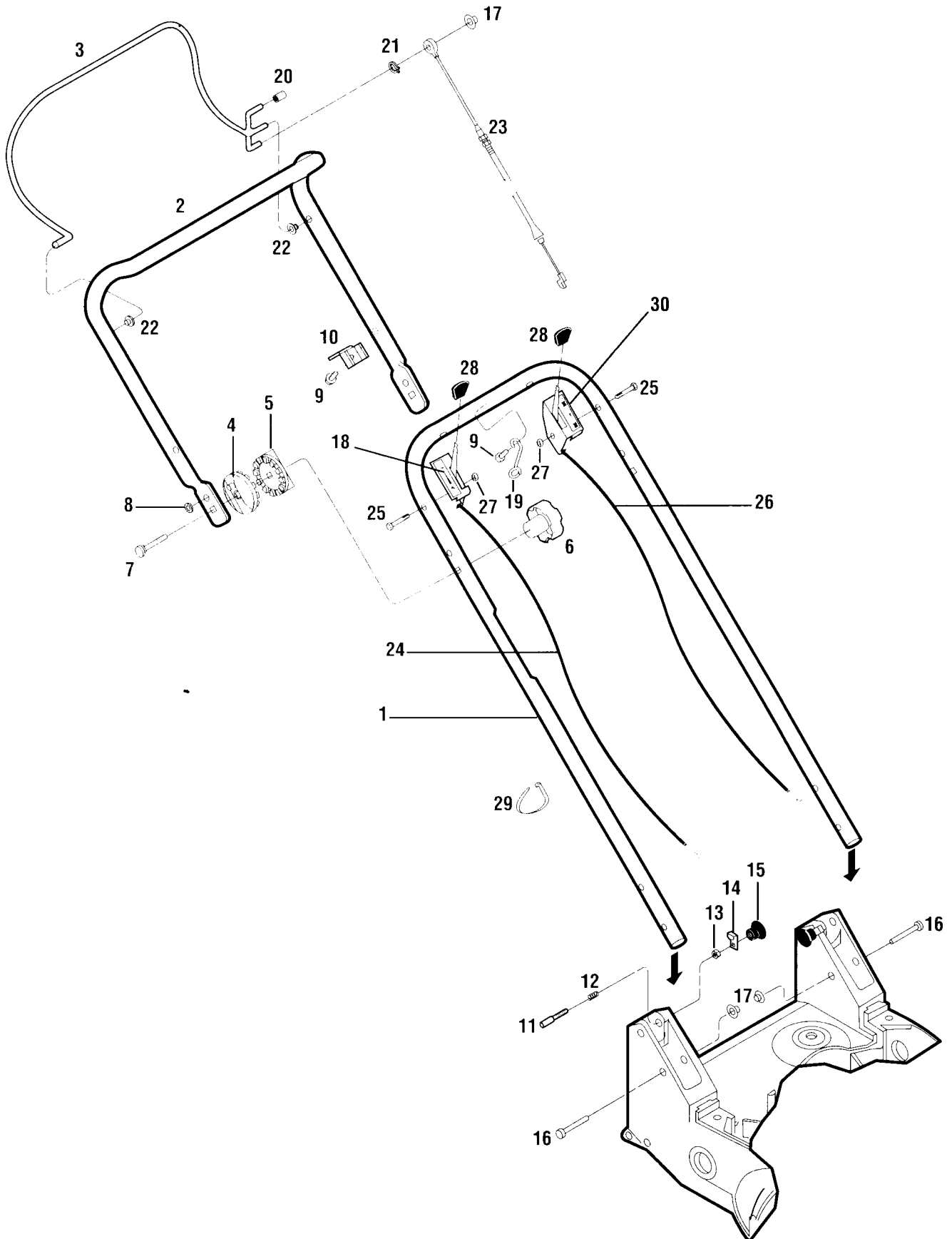


All references to left, right, front and rear of the machine are determined by standing in the operator's position and facing the direction of forward travel.

### IMPORTANT:

Some replacement parts that you receive may vary slightly in shape, color, or texture from the original parts. This is because certain parts are supplied to us by more than one manufacturer. Please be assured, however, that all parts must conform to our rigid quality specifications, and any slight variations will not affect the fit or performance of these parts.

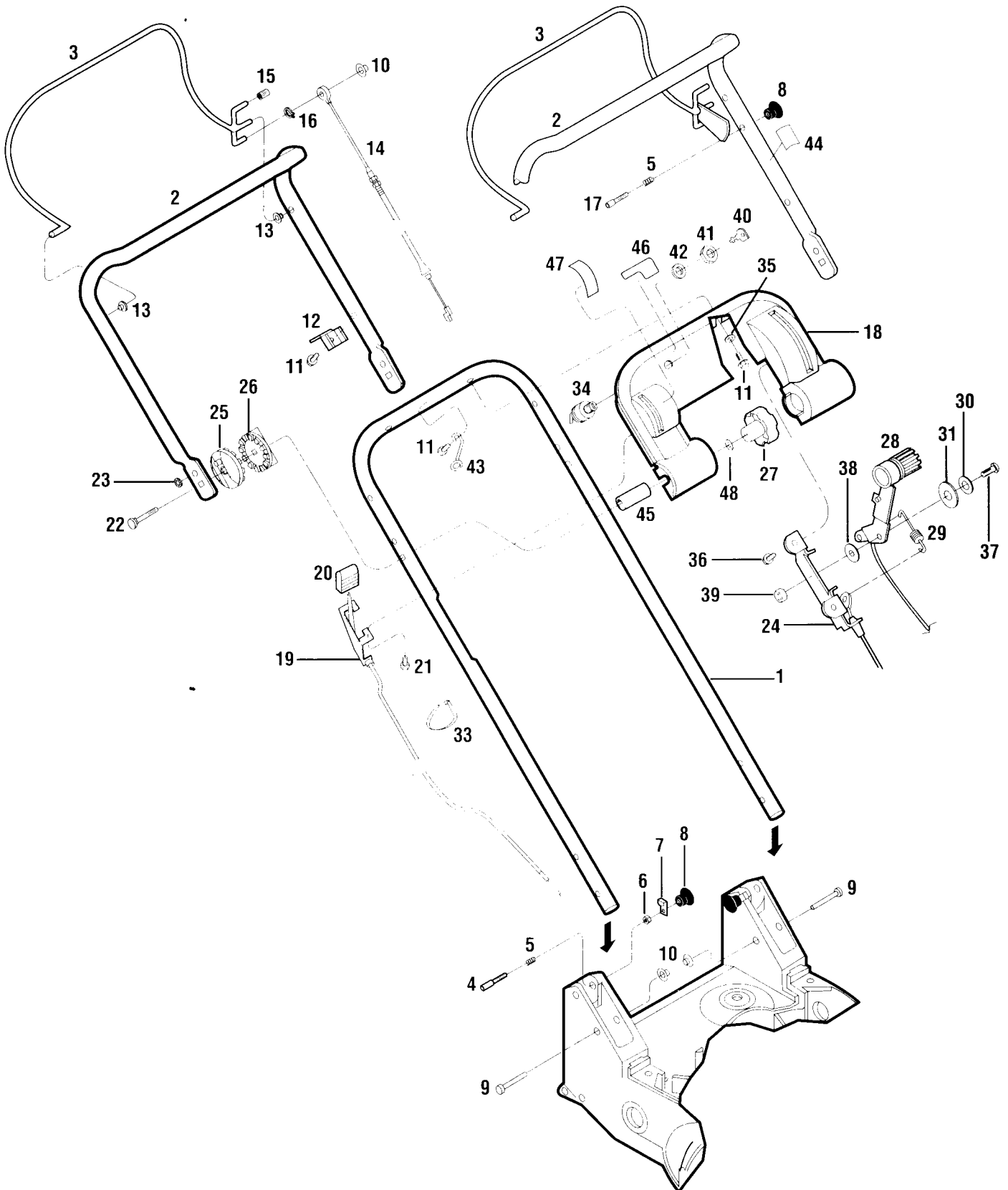
HANDLEBAR AND MOWER CONTROLS - MODELS 34020 & 34021



**HANDLEBAR AND MOWER CONTROLS - MODELS 34020 & 34021**

REF No.	PART No.	DESCRIPTION	QTY.	REF No.	PART No.	DESCRIPTION	QTY.
1	1765830001	Lower Handlebar .....	1	21	1908673	Ring, Grip, .312 dia. ....	1
2	1767435001	Upper Handlebar .....	1	22	1908677	Nyliner Bushing .....	2
3	1902096	Bail Assembly, OPC Control.....	1	23	1765935	Engine Brake (OPC) Cable .....	1
4	1767425	Handle Adj. Quadrant - Outside .....	2	24	1767639	Throttle Lever Control w/Cable .....	1
5	1767375	Handle Adj. Quadrant - Inside.....	2	25	1111601	Hex Cap Screw, 1/4-20 x 1-3/4	
6	1767400	Handle Adj. Knob.....	2			Model 34020.....	1
7	1767448	Carriage Screw, 5/16-18 x 2 .....	2			Model 34021.....	2
8	1765879	Retainer, 1/4 .....	2	26	1767614	Wheel Drive Lever Control	
9	1754128	Hex Flange Screw, 1/4-20 x 3/4 .....	2			w/Cable (Model 34021).....	1
10	1749977	Cable Bracket.....	1	27	1734398	Toplock Nut, 1/4-20	
11	1766534	Pin, Stop.....	2			Model 34020.....	1
12	1766531	Spring, Compression.....	2			Model 34021.....	2
13	9800	Hex Nut, 1/4-20 .....	2	28	1766121	Knob	
14	1766532	Arm, Stop .....	2			Model 34020.....	1
15	1766537	Knob .....	2			Model 34021.....	2
16	1766536	Clevis Pin.....	2	29	1763682	Cable Tie (reusable)	
17	1908679	Cap, Push-on, .312 dia .....	3			Model 34020.....	1
18	1768319	Decal - Throttle Control .....	1			Model 34021.....	3
19	1768535	Rope Guide.....	1	30	1768320	Decal - Wheel Drive (Model 34021)	1
20	1908678	Handle Grip.....	1				

**HANDLEBAR AND MOWER CONTROLS – MODELS 34022, 34023 & 34024**



**HANDLEBAR AND MOWER CONTROLS – MODELS 34022, 34023 & 34024**

REF No.	PART No.	DESCRIPTION	QTY.	REF No.	PART No.	DESCRIPTION	QTY.
1	1765830001	Lower Handlebar.....	1	22	1767449	Carriage Screw, 5/16-18 x 4-1/4 ...	2
2	1767435001	Upper Handlebar (Models 34022 & 34023).....	1	23	1765879	Retainer, 1/4.....	2
	1768302	Upper Handlebar w/Ref. 5, 8, 17 44 (Model 34024).....	1	24	1766511	Drive Control Assembly w/Cable ..	1
3	1902096	Bail Assembly, OPC Engine Brake Control (Models 34022 & 34023)	1	25	1767425	Handle Adj. Quadrant - Outside.....	2
	1902097	Bail Assembly, OPC Blade Brake Control (Model 34024).....	1	26	1767375	Handle Adj. Quadrant - Inside.....	2
4	1766534	Pin Stop.....	2	27	1767400	Handle Adj. Knob.....	2
5	1766531	Spring, Compression Models 34022 & 34023.....	2	28	1766510	Control Arm Assembly w/Cable.....	1
		Model 34024.....	3	29	1767651	Spring, Extension.....	1
6	9800	Hex Nut, 1/4-20.....	2	30	1767648	Washer, Belleville.....	1
7	1766532	Arm, Stop.....	2	31	1716233	Washer, Flat, 1/4.....	1
8	1766537	Knob Models 34022 & 34023.....	2	32	----	This Ref. No. Not Used.....	
		Model 34024.....	3	33	1763682	Cable Tie (Reusable - All Models Except Model 34023).....	4
9	1766536	Clevis Pin.....	2			Cable Tie (Reusable - Model 34023).....	5
10	1908679	Cap, Push-on, .312 dia.....	3	34	11405	Ignition Switch w/Ref. 40, 41 & 42 (Model 34023).....	1
11	1754128	Hex Flange Screw, 1/4-20 x 3/4....	6	35	1765591	Washer, Flat, .265 I.D.....	4
12	1749977	Cable Bracket.....	1	36	1766507	Screw, 1/4-15 x 7/8.....	2
13	1908677	Nyliner Bushing.....	2	37	1765593	Screw, Button-hd., 1/4-20 x 3/4....	1
14	1765935	Cable, OPC Engine Brake (Models 34022 & 34023).....	1	38	1767649	Nylon Bushing.....	1
	1765930	Cable, OPC Blade Brake Control (Model 34024).....	1	39	1734398	Toplock Nut, 1/4-20.....	1
15	1908678	Handle Grip.....	1	40	96520	Key, Ignition (Model 34023).....	2
16	1908673	Ring, Grip, .312 dia.....	1	41	92018	Hex Nut, 5/8-32 (Model 34023)....	1
17	1767438	Pin, Lock (Model 34024).....	1	42	94021	Lockwasher, 5/8 (Model 34023) ...	1
18	1765960	Handlebar Console.....	1	43	1768535	Rope Guide.....	1
19	1765917	Throttle Lever Control w/Cable.....	1	44	1766543	Decal - Release Bail (Model 34024)	1
20	1766121	Knob.....	1	45	1766587	Spacer.....	2
21	1766502	Screw, Special, #10-16 x 7/8.....	2	46	1765894	Decal - Electric Start (Model 34023)	1
				47	1768576	Throttle Decal (Models 34022, 34023).....	1
					1768577	Throttle Decal (Model 34024).....	1
				48	20545	Flat Washer, .32 I.D.....	2



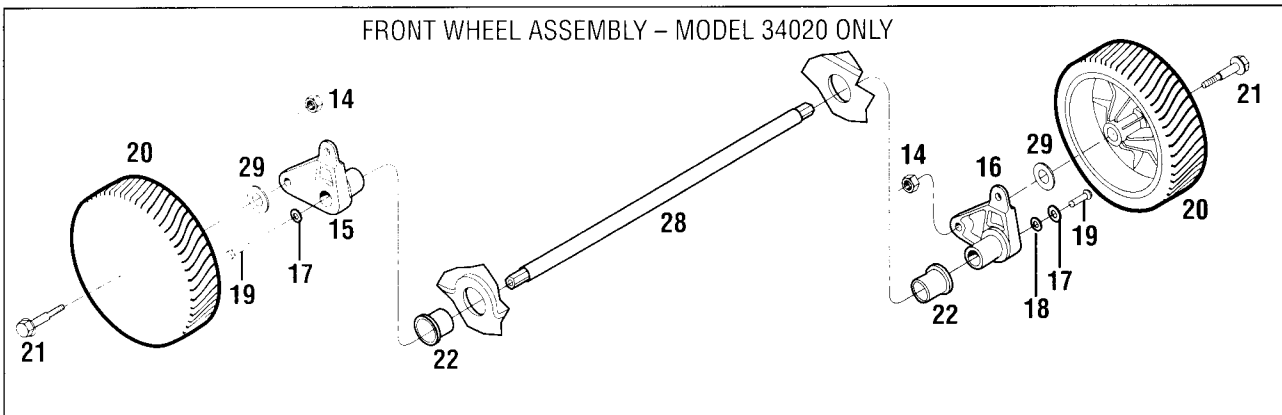
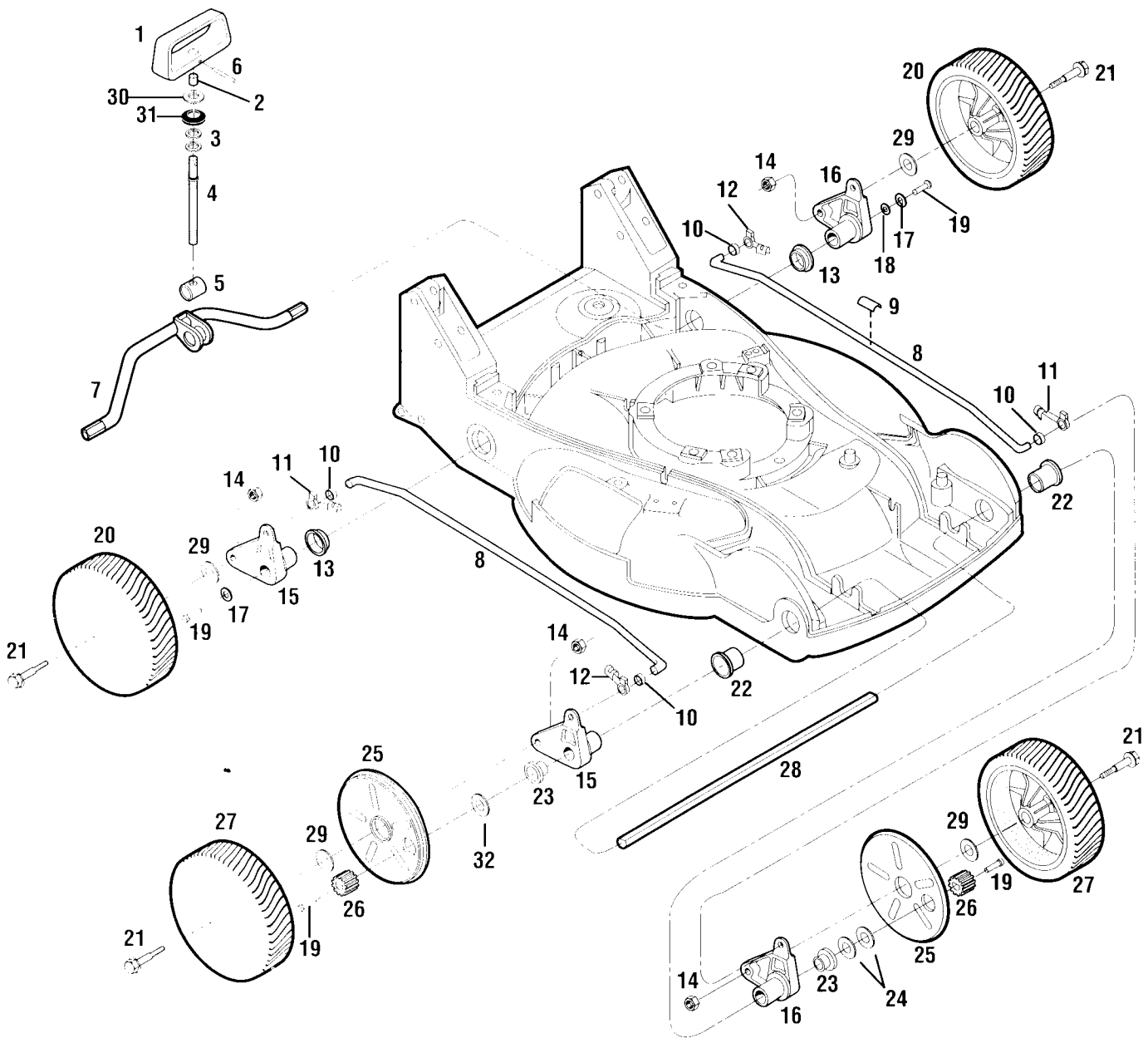


**ENGINES, MOWER DECK AND BLADE ASSEMBLIES**

REF No.	PART No.	DESCRIPTION	QTY.	REF No.	PART No.	DESCRIPTION	QTY.
1	1901960	Mower Deck w/Ref. 2, 3, 4, 9, 11, 12, 14, 15, 41 & 43 .....	1		1767588	Hex Capscrew, Grade 5, M10 x 30MM (Model 34024).....	2
2	1765552	Flap, Safety .....	1	24	9914	Lockwasher, 1/2 (except Model 34024) .....	1
3	1765553	Rod, Safety Flap .....	1	25	1746688	Shoulder Screw, 3/8-24 x 1.63 (except Model 34024) .....	1
4	1185304	Ring, Retaining .....	2	26	1767589	Lockwasher, M10 (Model 34024) ..	2
5	1768954	Cover, Front Deck (with Decal) .....	1	27	1185885	Woodruff Key, .188 x .625 Model 34020 .....	1
6	1768952	Cover, Rear Deck (with Decal) .....	1			Models 34021, 34022 & 34023 ..	2
7	1766503	Screw, Thd. Forming, #12-24 x .63 .....	5		97041	Woodruff Key, .156 x .625 (Model 34024) .....	2
8	1902112	Door, Discharge w/Ref. 42 & 43....	1	28	1766541	Blade Coupling (except Model 34024) .....	1
9	1766512	Screw, Special, #31-24 x 3/4 .....	1	29	1733398	Hex Locknut, 3/8-16 (except Model 34024) .....	2
10	1766514	Toplock Nut, 5/16-24 .....	1	30	1766546	Sheave, Engine (except Models 34020 & 34024) .....	1
11	1768434	Decal - Guard Warning .....	1		1766547	Sheave, Engine (Model 34024) .....	1
12	1739687	Decal - OPEI Blade Caution .....	1	31	1738845	Sq. Hd. Setscrew, 1/4-20 x 1/2 (except Models 34020 & 34024) ..	2
13	1765893	Decal - Cutting Height .....	1	32	1187876	Socket Hd. Setscrew, 1/4-20 x 1/4 (Model 34024) .....	2
14	1768436	Decal - Thrown Objects Danger ....	1	33	9904	Washer, .406 I.D. (Model 34024) ..	1
15	1768435	Decal - Pinch Point Warning (Models 34021, 34022, 34023 & 34024) .....	1	34	1767608	Locating Bracket (Model 34024) ...	1
16		This Ref. No. Not Used .....		35	1765871	Clutch, Blade Brake (Model 34024) ..	1
17	*	Engine, 4HP Briggs & Stratton, Recoil Start (Models 34020 & 34021) .....	1	36	1767754	Sems Screw, Thd. Forming, #10-24 x 1/2 (Model 34024) .....	2
	*	Engine, 5HP Briggs & Stratton, Recoil Start (Model 34022) .....	1	37	1767658	Washer, Flat, #12 (Model 34024) ..	1
	*	Engine, 5HP Briggs & Stratton, Electric Start (Model 34023) .....	1	38	1765886	Spring, Extension (Model 34024) ..	1
	*	Engine, 5.5HP Briggs & Stratton, Europa, Recoil Start, OHV (Model 34024) .....	1	39	----	Cable, Blade Brake Control - see Ref. 14, Page 5 (Model 34024) ..	
18	1746425	Rope Stop .....	1	40	1768538	Shoulder Screw, 5/16-18 x 2 (Model 34024) .....	1
19	1766513001	Heat Shield (except Model 34024) ..	1	41	1768443	Switch, Interlock .....	1
20	90002	Hex Flange Screw, Thd. Forming, #8-18 x .405 .....	2	42	1764197	Tab, Switch .....	1
21	1767610	Screw, Thd. Forming, 3/8-16 x 1-1/4 .....	3	43	97000	Rivet, Pop .....	4
22	1768306	Blade Kit w/ Ref. 23 & 29 (Models 34020, 34021, 34022 & 34023) ..	1	44	1902137	Screw, #10-24 x .25 .....	1
	1768307	Blade Kit w/ Ref. 23 & 26 (Model 34024) .....	1	45	1715127	Clamp, Housing (Model 34024) ....	1
23	1100046	Hex Capscrew, Grade 5, 3/8-16 x 1 (except Model 34024) .....	2	46	1768958	Decal (Logo) .....	1
				47	1768743	Decal (Warning) .....	1
				48	9218	Clip, Cable (Models 34021, 34022, 34023, 34024) .....	1

\* Order parts or replacement engine from nearest Briggs and Stratton authorized dealer. Refer to engine for model, type and code identification.

CUTTING HEIGHT CONTROL AND WHEEL ASSEMBLIES

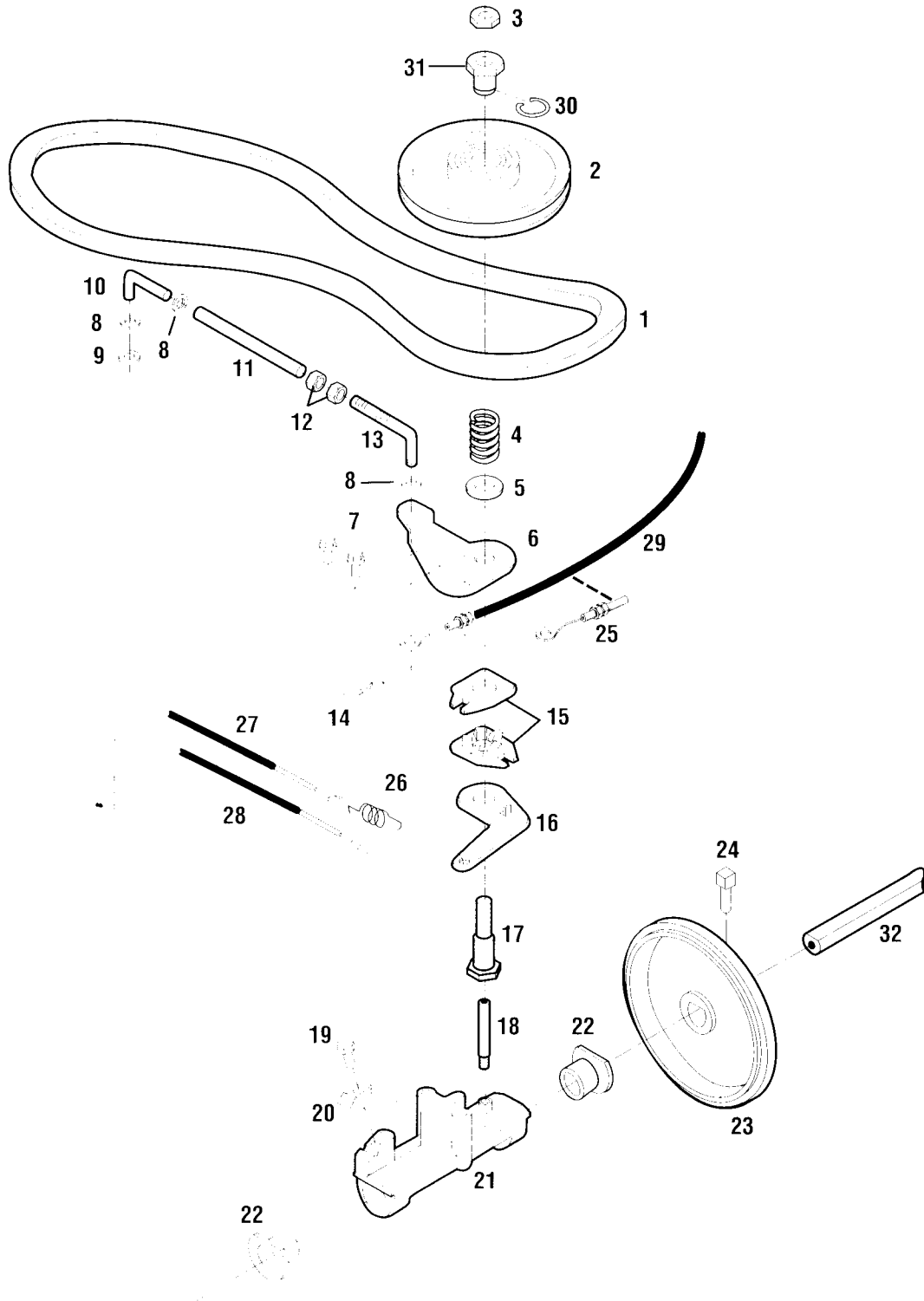


**CUTTING HEIGHT CONTROL AND WHEEL ASSEMBLIES**

REF No.	PART No.	DESCRIPTION	QTY.	REF No.	PART No.	DESCRIPTION	QTY.
1	1754149	Height Adj. Handle .....	1	20	1765740	Tire/Wheel Assembly .....	
2	1762886	Spacer, Handle .....	1			Model 34020 .....	4
3	20546	Washer, Flat, 1/2 .....	2			Models 34021, 34022, 34023 & 34024 .....	2
4	1764815	Screw, Handle Adj. ....	1	21	1765737	Shoulder Screw, 3/8-16 x 2.31.....	4
5	1765594	Pivot, Screw Adj. ....	1	22	1764817	Bearing, Axle Arm, Front.....	2
6	1120210	Roll Pin, .188 x 1 .....	1	23	1764816	Bearing, Axle (except Model 34020).....	2
7	1768578	Axle, Rear.....	1	24	1185831	Washer, Shim (except Model 34020).....	A/R
8	1764818010	Link, Height Adj. ....	2	25	1765592	Shield, Wheel (except Model 34020).....	2
9	1767792	Decal - Height Adj. Line.....	1	26	1764570	Pinion, Drive (except Model 34020).....	2
10	1768962	Nyliner Bushing.....	4	27	1765750	Tire/Wheel Assembly - Front (except Model 34020) .....	2
11	1765551	Clip, Rod (right rear/left front) .....	2	28	1764383	Axle, Front Drive (Models 34021, 34022, 34023 & 34024) .....	1
12	1765550	Clip, Rod (left rear/right front) .....	2		1768579	Axle, Front Drive (Model 34020) ...	1
13	1766500	Bearing, Axle Arm, Rear.....	2	29	1909311	Washer, Flat, .401 I.D. ....	4
14	9807	Hex Locknut, 3/8-16 .....	4	30	1185816	Washer, Flat, 1-1/2 x 1 x 1/16 .....	1
15	1764820	Arm, Axle, Right Hand.....	2	31	1708850	Grommet, Rubber .....	1
16	1764819	Arm, Axle, Left Hand .....	2	32	1983638	Washer, Thrust, (Models 34021, 34022, 34023, 34024).....	1
17	1765591	Washer, Flat, .265 Model 34020 .....	4				
		Models 34021, 34022, 34023 & 34024 .....	2				
18	1767439	Washer, Flat, .281 Model 34020 .....	2				
		Models 34021, 34022, 34023 & 34024 .....	1				
19	9718*	Hex Socket Hd 1/4-20 x 3/4 .....	4				

\* Apply a coating of thread locking compound (such as Loctite 242®) before installing part.

WHEEL DRIVE ASSEMBLIES - MODELS 34021, 34022, 34023 & 34024

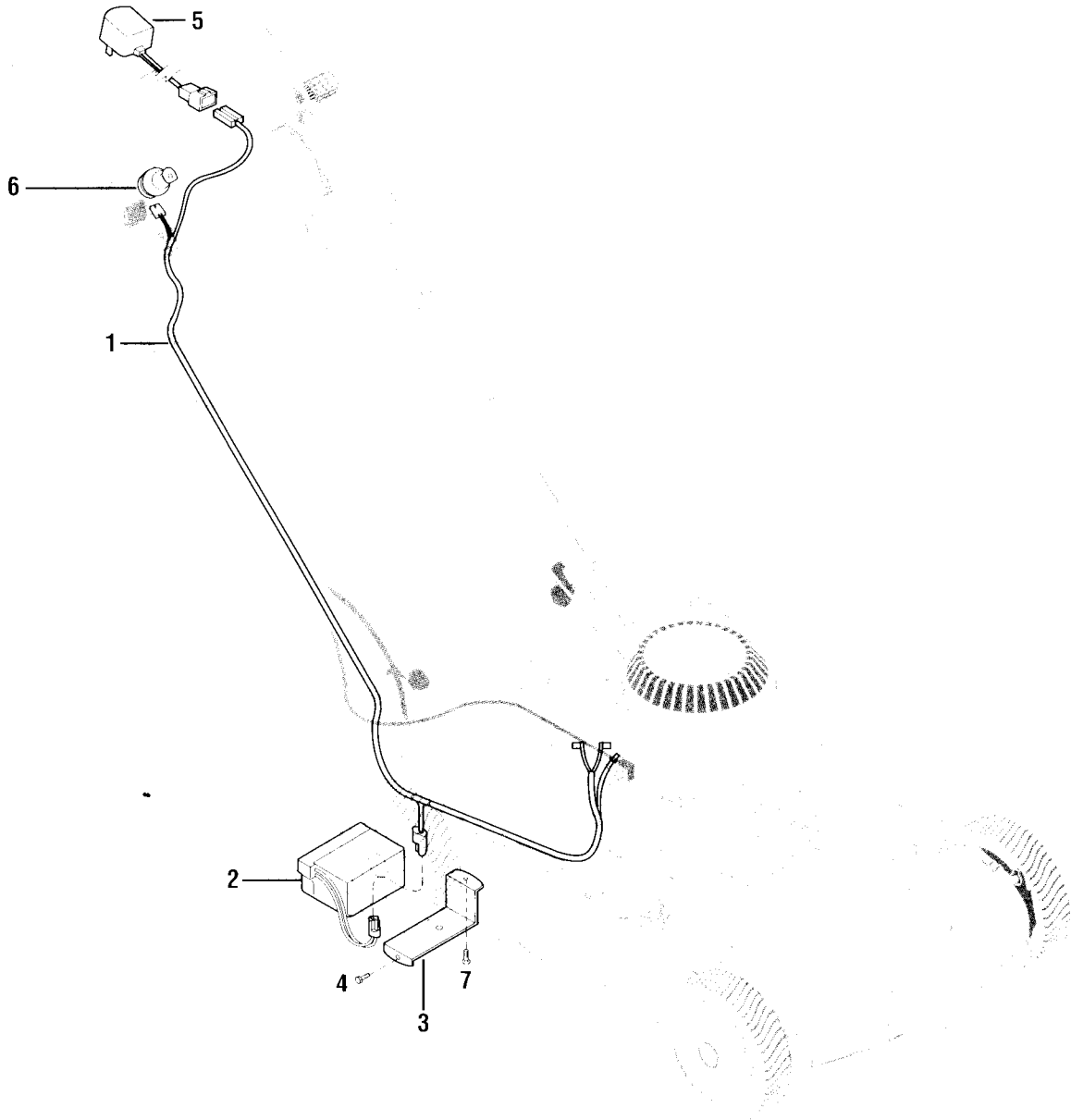


**WHEEL DRIVE ASSEMBLIES - MODELS 34021, 34022, 34023 & 34024**

REF No.	PART No.	DESCRIPTION	QTY.	REF No.	PART No.	DESCRIPTION	QTY.
1	1765595	V-Belt, 3L .....	1	20	1715127	Clamp, Housing .....	1
2	1766528	Sheave w/Bearing .....	1	21	1765554	Carrier .....	1
3	1765749	Hex Locknut, 1/2-20 .....	1	22	1768300	Bearing, Carrier (set of 2) .....	2
4	1765556	Spring, Compression .....	1	23	1765572	Disc, Friction Drive .....	1
5	94003	Washer, Special.....	1	24	1103440	Sq. Hd. Setscrew, 1/4-20 x .41 .....	1
6	1765557	Plate, Anchor .....	1	25	1767599	Control, Speed Adj. (Model 34021) .....	1
7	1754128	Hex Flange Screw, 1/4-20 x 3/4 .....	2	26	1767650	Spring, Extension (Model 34021) .....	1
8	9900	Washer, Special.....	3	27	---	Wheel Drive Cable (Model 34021), see Page 3, Ref. 26.....	1
9	1765879	Retainer, 1/4 .....	1	28	---	Wheel Drive Cable (except Model 34021), see Page 5, Ref. 24 .....	1
10	1765814	Rod, Anchor .....	1	29	---	Speed Control Cable (except Model 34021). See Page 5, Ref. 28.....	1
11	1765739	Sleeve .....	1	30	9518	Ring, Retaining .....	1
12	9800	Jam Nut, 1/4 .....	2	31	1768959	Nut, Adj. ....	1
13	1765815	Rod, Adj. ....	1	32	---	Axle, Drive. See Page 9, Ref. 28 (Models 34022, 34023 & 34024)	1
14	9338	Cotter Pin, .08 dia. ....	1				
15	1764758	Plate, Ramp .....	2				
16	1766529	Arm, Ramp.....	1				
17	1765598	Sleeve, Adj. ....	1				
18	1765597*	Shoulder Stud .....	1				
19	1767754	Sems Screw, Thd. Forming, #10-24 .....	1				

\* Apply a coating of thread locking compound (such as Loctite 242®) before installing part.

ELECTRIC START SYSTEM - MODEL 34023



REF No.	PART No.	DESCRIPTION	QTY.
1	1765888	Harness, Wire.....	1
2	1756550	Battery.....	1
3	1765887001	Bracket, Battery.....	1
4	1754128	Hex Flange Screw, Thd. Forming 1/4-20 x 3/4.....	1
5	1768449	Charger, Battery.....	1

REF No.	PART No.	DESCRIPTION	QTY.
6	----	See Page 5, Ref. 34, 40, 41, 42 & 48 for ignition switch, switch mounting hardware, decal and ignition keys.....	
7	9552	Hex Flange Screw, Thd Forming - 1/4-20 x 1/2.....	1



**TROY-BILT MANUFACTURING COMPANY, 102nd St. & 9th Ave., Troy, N.Y. 12180**  
For Parts Service, call Toll-Free: 1-800-648-6776 • For Technical Service, call Toll-Free: 1-800-833-6990

**GARDEN WAY BRANCH CANADA, 1515 Matheson Blvd. E., Unit B11, Mississauga, Ontario L4W 2P5**  
Call Toll-Free: 1-800-225-3585